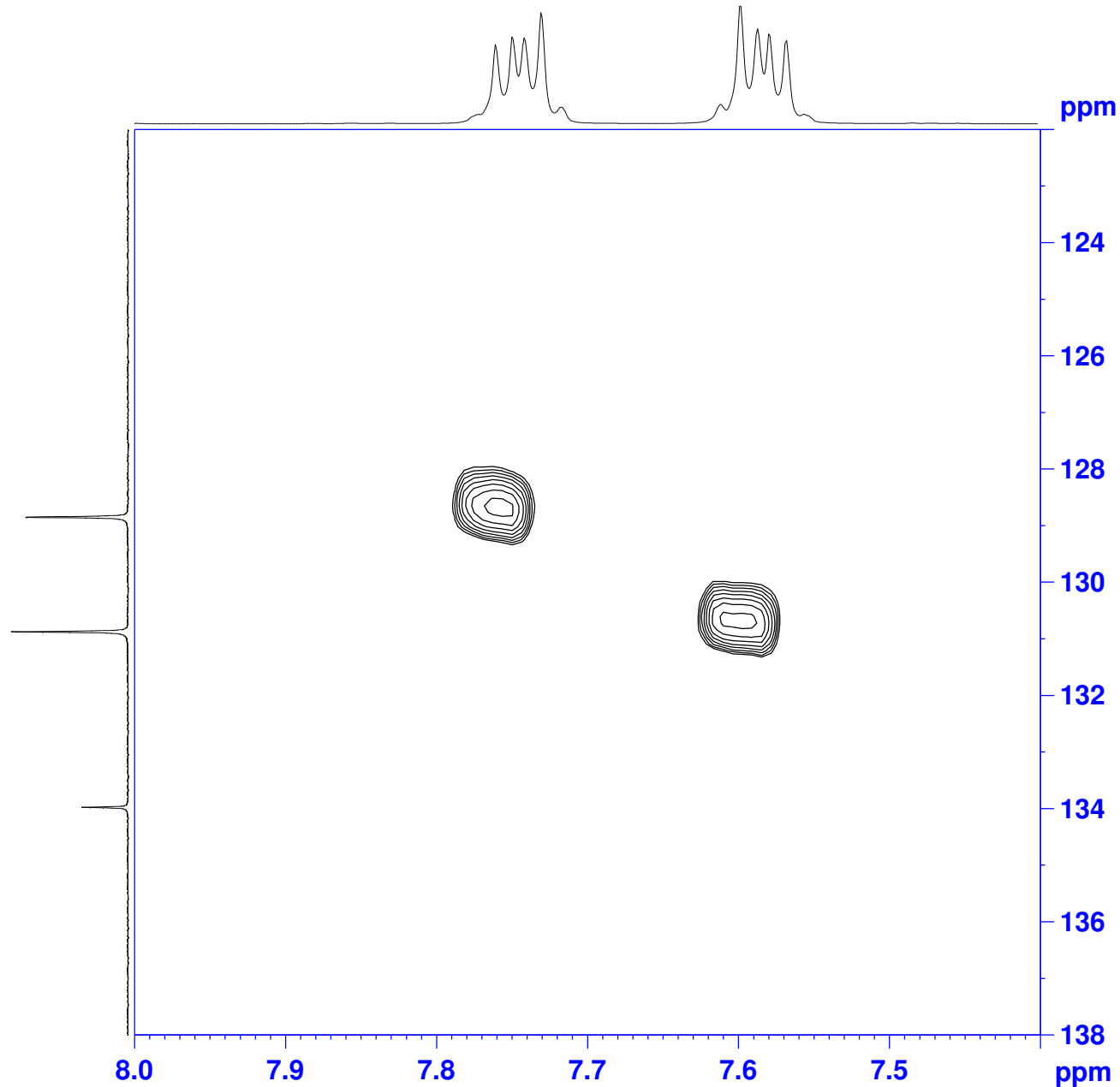


Potassium Hydrogen Phthalate in D2O+TMS



Current Data Parameters  
 NAME b170412lsdk.PHPhtalate  
 EXPNO 4  
 PROCNO 1

F2 - Acquisition Parameters  
 Date\_ 20170412  
 Time 14.11  
 INSTRUM spect  
 PROBHD 5 mm PATXO 31P  
 PULPROG hsqcetdgpssi2.2  
 TD 2048  
 SOLVENT D2O  
 NS 8  
 DS 16  
 SWH 3906.250 Hz  
 FIDRES 1.907349 Hz  
 AQ 0.2621440 sec  
 RG 23170.5  
 DW 128.000 usec  
 DE 6.00 usec  
 TE 298.2 K  
 CNST2 145.000000  
 CNST17 -0.500000  
 d0 0.0000300 sec  
 d1 1.0000000 sec  
 d4 0.00172414 sec  
 d11 0.03000000 sec  
 d16 0.00020000 sec  
 D21 0.00345000 sec  
 D24 0.00086207 sec  
 DELTA 0.00272100 sec  
 DELTA1 0.00120800 sec  
 DELTA2 0.00147414 sec  
 DELTA3 0.00056207 sec  
 DELTA4 0.00027414 sec  
 DELTA5 0.00395000 sec  
 INO 0.0002650 sec  
 ST1CNT 0

\*\*\*\*\* CHANNEL f1 \*\*\*\*\*  
 NUC1 1H  
 P1 11.50 usec  
 P2 23.00 usec  
 P28 1000.00 usec  
 PL1 -3.00 dB  
 SFO1 300.1315007 MHz

\*\*\*\*\* CHANNEL f2 \*\*\*\*\*  
 CPDPRG[2] garp4  
 NUC2 13C  
 P3 8.30 usec  
 P14 500.00 usec  
 P24 2000.00 usec  
 PCPD2 70.00 usec  
 PL0 120.00 dB  
 PL2 -3.00 dB  
 PL12 16.80 dB  
 SFO2 75.4760505 MHz  
 SF3 7.20 dB  
 SF7 7.20 dB  
 SPNAM[3] Crp60,0.5,20.1  
 SPNAM[7] crp60comp.4  
 SPOAL3 0.500  
 SPOAL7 0.500  
 SPOFFS3 0 Hz  
 SPOFFS7 0 Hz

\*\*\*\*\* GRADIENT CHANNEL \*\*\*\*\*  
 GPNAM[1] SINE.100  
 GPNAM[2] SINE.100  
 GPNAM[3] SINE.100  
 GPNAM[4] SINE.100  
 GEZ1 80.00 %  
 GEZ2 20.10 %  
 GEZ3 11.00 %  
 GEZ4 -5.00 %  
 F16 1000.00 usec  
 P19 600.00 usec

F1 - Acquisition parameters  
 TD 256  
 SFO1 75.47605 MHz  
 FIDRES 73.702827 Hz  
 SW 249.986 ppm  
 FRMODE Echo-Antiecho

F2 - Processing parameters  
 SI 2048  
 SF 300.1299558 MHz  
 WDW QSINE  
 SSB 2  
 LB 0 Hz  
 GB 0  
 PC 1.40

F1 - Processing parameters  
 SI 2048  
 MC2 echo-antiecho  
 SF 75.4677374 MHz  
 WDW QSINE  
 SSB 2  
 LB 0 Hz  
 GB 0