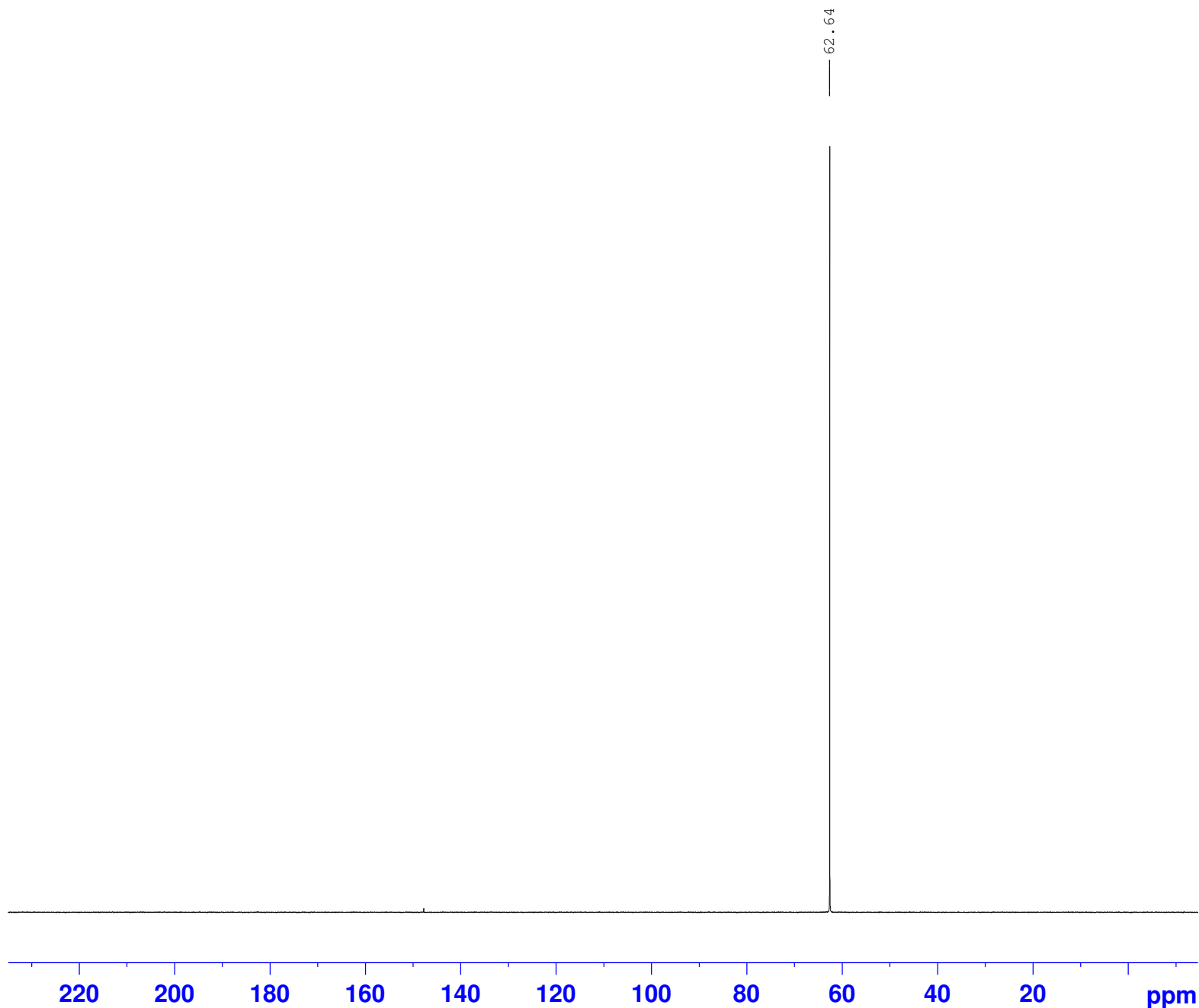


Ethylene Glycol in D2O+TMS



Current Data Parameters
NAME b1704121sdk.EGlycol
EXPNO 1
PROCNO 1

F2 - Acquisition Parameters
Date_ 20170413
Time 9.29
INSTRUM spect
PROBHD 5 mm PATXO 31P
PULPROG zgpg30
TD 65536
SOLVENT D2O
NS 1024
DS 4
SWH 18832.393 Hz
FIDRES 0.287360 Hz
AQ 1.7399808 sec
RG 18390.4
DW 26.550 usec
DE 6.00 usec
TE 298.2 K
D1 1.00000000 sec
d11 0.03000000 sec
DELTA 0.89999998 sec
TD0 128

==== CHANNEL f1 =====
NUC1 13C
P1 10.00 usec
PL1 -3.00 dB
SFO1 75.4760500 MHz

==== CHANNEL f2 =====
CPDPRG[2] waltz65
NUC2 1H
PCPD2 80.00 usec
PL2 -3.00 dB
PL12 16.50 dB
PL13 20.00 dB
SFO2 300.1312000 MHz

F2 - Processing parameters
SI 65536
SF 75.4677381 MHz
WDW EM
SSB 0
LB 1.00 Hz
GB 0
PC 1.40