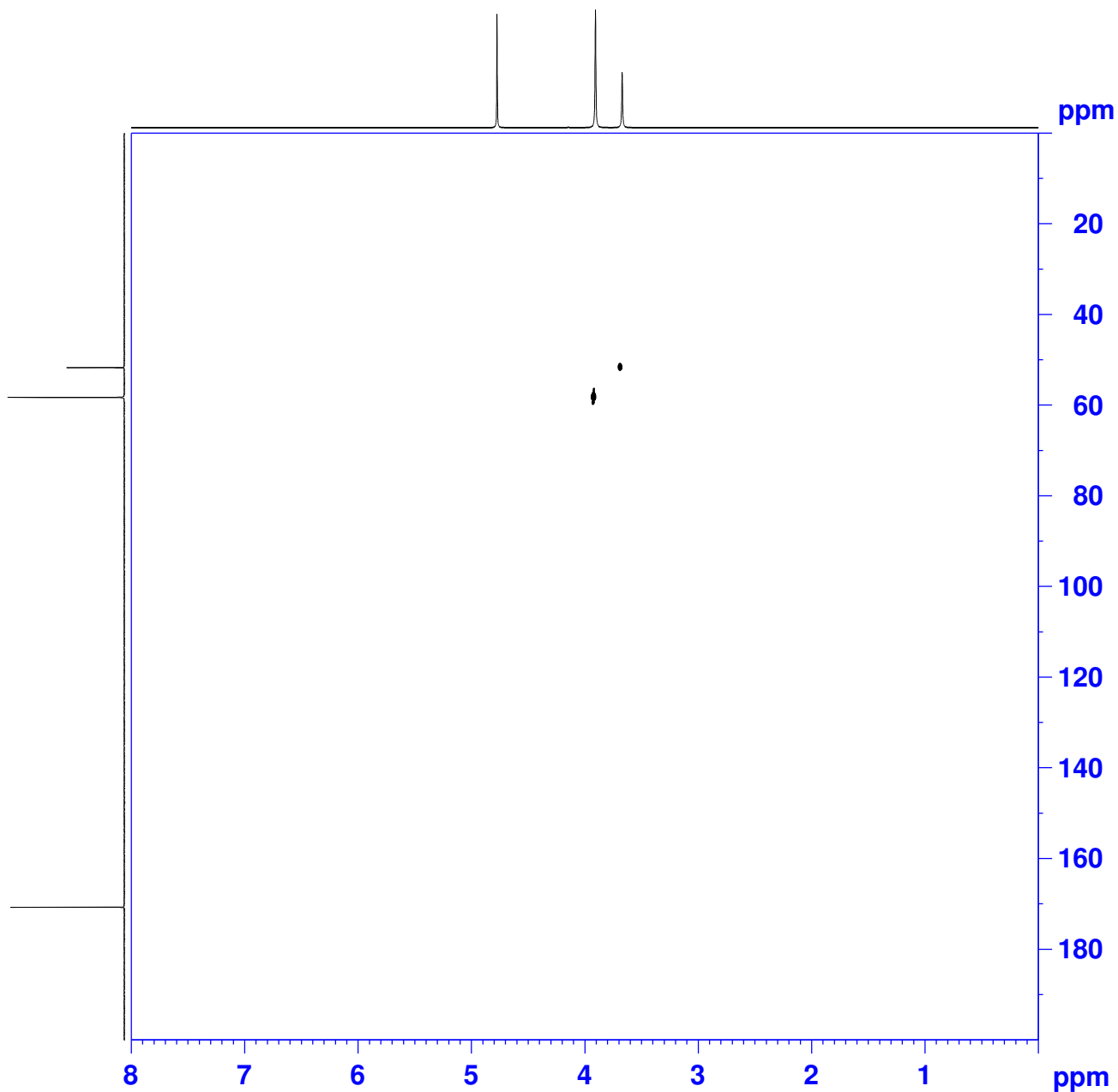


Dipotassium dihydrogen ethylenediaminetetraacetate dihydrate in D2O+TMS



```
Current Data Parameters
NAME      b1704191saa.EDTA
EXPNO     4
PROCNO    1

F2 - Acquisition Parameters
Date_     20170419
Time      18.44
INSTRUM   spect
PROBHD    5 mm PATKO 31P
PULPROG   hsqcetdgpssi2.2
TD         2048
SOLVENT   D2O
NS         4
DS         16
SWH        3906.250 Hz
FIDRES     1.907349 Hz
AQ         0.26214440 sec
RG         11585.2
DW         128.000 usec
DE         6.00 usec
TE         298.2 K
CNST2     145.0000000
CNST17    -0.5000000
d0         0.00000300 sec
d1         1.00000000 sec
d4         0.00172414 sec
d11        0.03000000 sec
d16        0.00020000 sec
d21        0.00345000 sec
D24        0.00086207 sec
DELTA      0.00272100 sec
DELTA1     0.00120800 sec
DELTA2     0.00147414 sec
DELTA3     0.00056207 sec
DELTA4     0.00027414 sec
DELTA5     0.00395000 sec
IN0        0.0002650 sec
ST1CNT     0

===== CHANNEL f1 =====
NUC1       1H
P1         11.50 usec
P2         23.00 usec
P28        1000.00 usec
PL1        -3.00 dB
SFO1       300.1315007 MHz

===== CHANNEL f2 =====
CPDPRG[2]  garp4
NUC2       13C
P3         8.30 usec
P14        500.00 usec
P24        2000.00 usec
PCPD2      70.00 usec
PL0        120.00 dB
PL2        -3.00 dB
PL12       16.80 dB
SFO2       75.4760505 MHz
SE3        7.20 dB
SP7        7.20 dB
SPNAM[3]   Crp60,0.5,20.1
SPNAM[7]   crp60comp.4
SPOAL3     0.500
SPOAL7     0.500
SPOFFS3    0 Hz
SPOFFS7    0 Hz

===== GRADIENT CHANNEL =====
GPNAM[1]   SINE.100
GPNAM[2]   SINE.100
GPNAM[3]   SINE.100
GPNAM[4]   SINE.100
GF21       80.00 %
GF22       20.10 %
GF23       11.00 %
GF24       -5.00 %
P16        1000.00 usec
P19        600.00 usec

F1 - Acquisition parameters
TD         256
SFO1       75.47605 MHz
FIDRES     73.702827 Hz
SW         249.986 ppm
FRMODE     Echo-Antiecho

F2 - Processing parameters
SI         2048
SF         300.1299762 MHz
WDW        QSINE
SSB        2
LB         0 Hz
GB         0
PC         1.40

F1 - Processing parameters
SI         2048
MC2        echo-antiecho
SF         75.4677425 MHz
WDW        QSINE
SSB        2
LB         0 Hz
GB         0
```